



Lens Power

A complete data and analytics solution for the energy transition

Lens Power Solutions

Identify, screen, and value high-growth energy opportunities in seconds with Lens Power, an easy-to-use, integrated data and analytics platform.

Lens Power connects conventional power and renewable energy intelligence to deliver an unparalleled level of depth on the state and future of the global electricity sector.

Discovery: Access the world of power assets to navigate the energy transition

- Screen and benchmark companies and assets in clean energy
- Analyze LCOE
- Assess power prices and generation levels
- Examine installation forecasts
- Visualize transmission lines, wind speeds, and solar irradiance

Contact Us:

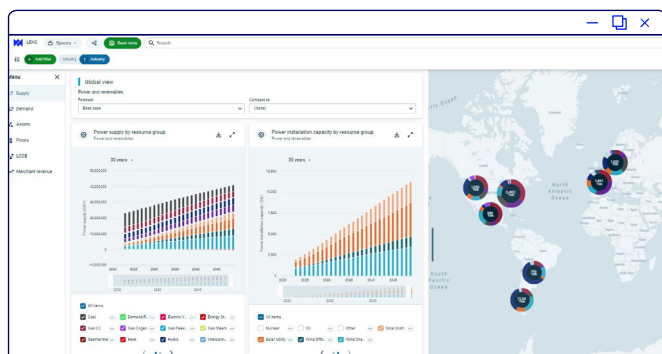
Europe: +44 131 243 4400

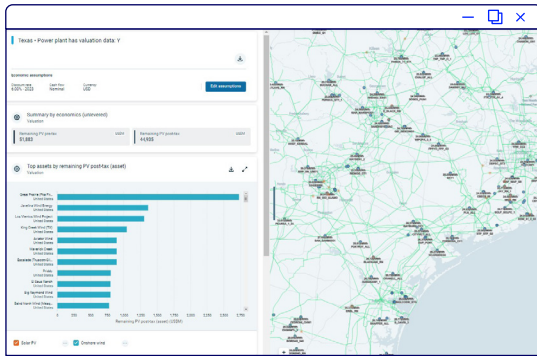
Americas: +1 713 470 1600

Asia Pacific: +65 6518 0800

Email: contactus@woodmac.com

Website: www.woodmac.com





Valuations: Explore valuations of assets to understand the investment landscape

- View the IRR for renewable assets
- Visualize cash flow, capital costs and operating expenditures
- Perform sensitivity analysis
- Flex economic assumptions
- Explore fully auditable Excel-based calculation file

One dataset. One view.

132,000+ assets and 13+ TW total capacity...and counting



57,700+
Wind Power



3,900+
Energy Storage



35,800+
Solar Power



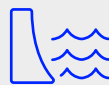
1,000+
Hydrogen Projects



21,500+
Conventional Power



850+
Ammonia Plants



11,800+
Hydroelectric Power



140+
Electrolyzer Vendors

Across



180
countries



27,200+
parent companies
and subsidiaries

Lens Power Key Business Outcomes

Enterprise-wide decision-making from the board room to your desk



Strategically position your organization to quickly respond to market conditions and be on the forefront of the energy transition



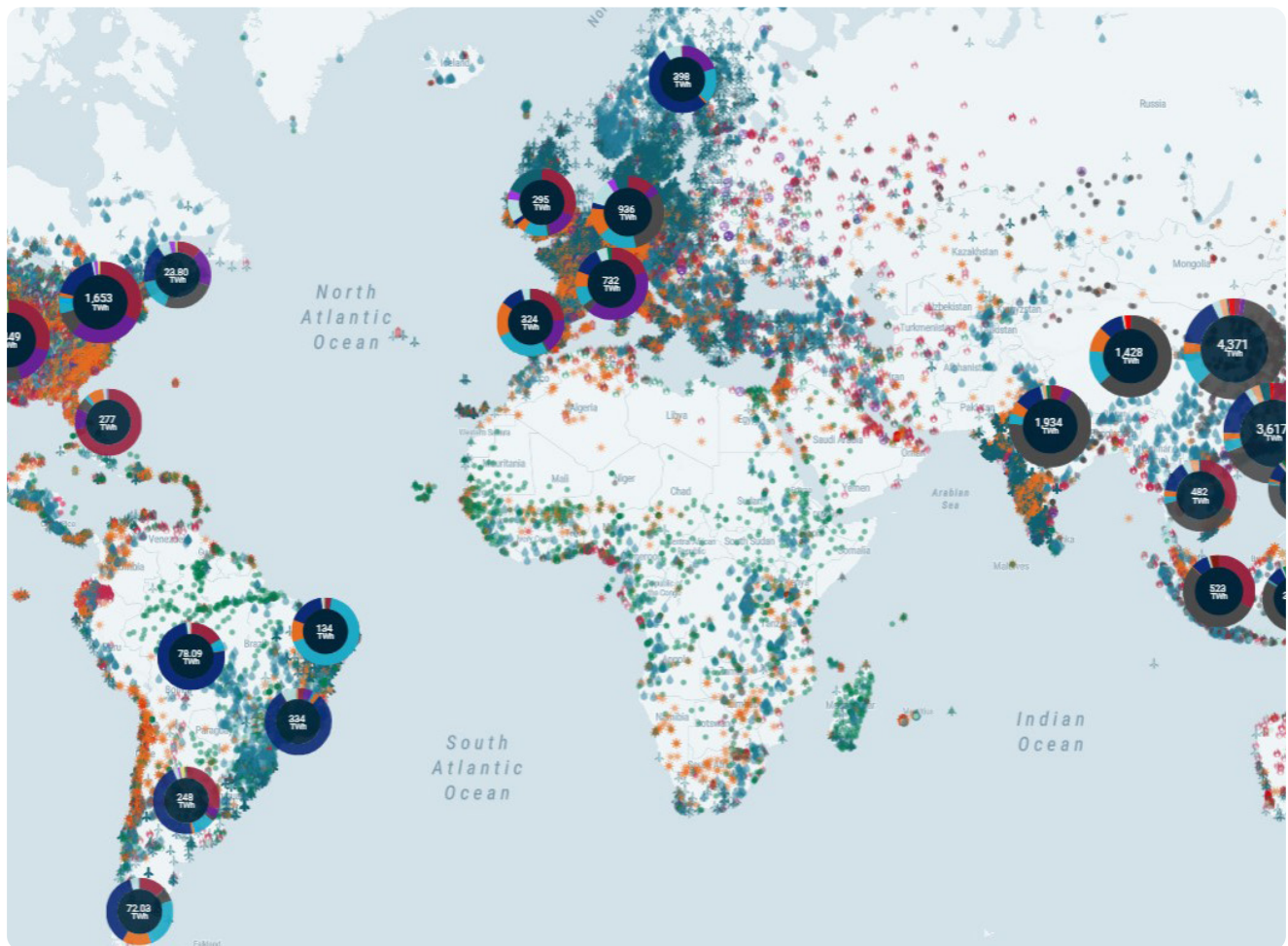
Minimize risk by validating portfolio strategies against trusted Wood Mackenzie data sets and models



Maximize investment opportunities in clean energy with trusted, analytics-ready data for confident decision-making



Increase productivity and lower costs with immediate insights using an intuitive interface fit for all users



Lens Power. Connecting the dots across the electricity supply chain

Find out more www.woodmac.com/lens/power

Wood Mackenzie™, is a trusted intelligence provider, empowering decision-makers with unique insight on the world's natural resources. We are a leading research and consultancy business for the global energy, power and renewables, subsurface, chemicals, and metals and mining industries. For more information visit: **woodmac.com**

WOOD MACKENZIE is a trademark of Wood Mackenzie Limited and is the subject of trademark registrations and/or applications in the European Community, the USA and other countries around the world.

Europe:	+44 131 243 4400
Americas:	+1 713 470 1600
Asia Pacific:	+65 6518 0800
Email:	contactus@woodmac.com
Website:	www.woodmac.com

Disclaimer

These materials, including any updates to them, are published by and remain subject to the copyright of the Wood Mackenzie group ("Wood Mackenzie"), and are made available to clients of Wood Mackenzie under terms agreed between Wood Mackenzie and those clients. The use of these materials is governed by the terms and conditions of the agreement under which they were provided. The content and conclusions contained are confidential and may not be disclosed to any other person without Wood Mackenzie's prior written permission. Wood Mackenzie makes no warranty or representation about the accuracy or completeness of the information and data contained in these materials, which are provided 'as is'. The opinions expressed in these materials are those of Wood Mackenzie, and nothing contained in them constitutes an offer to buy or to sell securities, or investment advice. Wood Mackenzie's products do not provide a comprehensive analysis of the financial position or prospects of any company or entity and nothing in any such product should be taken as comment regarding the value of the securities of any entity. If, notwithstanding the foregoing, you or any other person relies upon these materials in any way, Wood Mackenzie does not accept, and hereby disclaims to the extent permitted by law, all liability for any loss and damage suffered arising in connection with such reliance.