



Product Overview

North American Crude Oil Runs Forecast

Features

Every 6 weeks: 3-year forecast report including a corresponding Excel data sheet

- Delivers the latest public data on refinery runs from multiple sources, bridging the gap between the actualized public data using estimates from Woodmac's proprietary refinery monitors, and utilizes information on major planned turnarounds to inform our forward-looking view
- Granular refinery-level forecast for 13 major refineries in TX and LA, including weekly updates based on proprietary data
- Comprehensive turnaround coverage tables detailing planned distillation capacity offline, along with up-to-date unplanned outage information

Weekly: Updated report and data file with weekly EIA/NEB runs, including commentary on the week's operational upsets

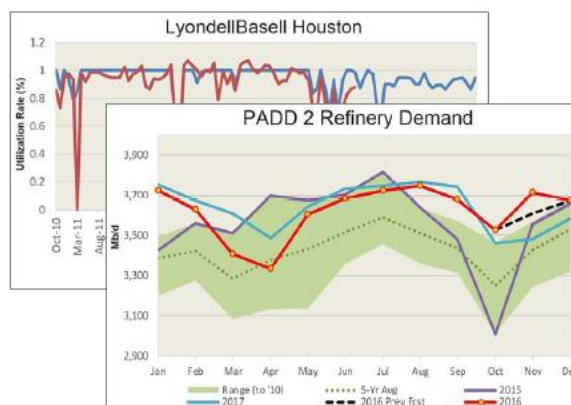
Quarterly: Comprehensive company conference call notes file covering 18 publicly-traded refiners in North America

A highly detailed refinery crude runs forecast with updates on refinery level turnarounds for all refineries in the U.S. and Canada.

Woodmac's North American Crude Oil Runs Forecast report examines publicly available turnaround information, proprietary refinery infrared camera signals, and forward crack spreads to guide our industry-leading crude oil demand forecast.

This product includes detailed PADD/Canada level refinery runs, utilization rates, and crude processing capacity forecasts for the major crude oil demand centres in North America. For further analysis, we include tables detailing each turnaround and its impact on crude runs by month.

We also provide refinery-level forecasts for several refineries, including weekly updates based on our proprietary infrared camera signals. Individual refinery level forecasts include: MPC Garyville, Motiva Convent, Motiva Norco, PSX Belle Chasse, PSX Westlake, LYB Houston, XOM Beaumont, MPC Galveston Bay /TX City, PBR Pasadena, PSX Sweeny, VLO Port Arthur, VLO Three Rivers, and VLO Houston.



Woodmac's North American Crude Oil Runs Forecast provides primary insight into refinery demand, including historical trends and predicted forecasts.

Benefits

- Most detailed and up-to-date data available, which is easily accessible and synthesized into a single report and data file
- Actionable intelligence to make Efficient, strategic decisions in one of the world's most vital areas of crude oil demand
- In-house analysis to bridge any gaps within refinery crude oil demand models
- Unlimited, real-time access to forecast team

Report Methodology & Considerations

This report incorporates EIA/NEB/TX RRC monthly and weekly refinery runs, utilization, and capacity data alongside Woodmac's proprietary refinery infrared cameras to provide the most accurate and detailed-driven refinery forecast report on the market.

The forecast:

- Provides detailed "bottom-up" analysis and forecast using data covering over 100 crude oil refineries in the U.S. and Canada
- Adjusts weekly based on weekly runs, utilization, capacity, and turnaround information by PADD region/Canada, and for 13 individual refineries (TX and LA)
- Offers comprehensive turnaround summary tables, refinery capacity expansions, and throughput guidance information for reference
- Includes corporate conference call notes for 18 publicly-traded refiners in North America

Designed for you

Traders

Forecast upcoming crude demand through detailed refinery maintenance schedules. Validate your specific demand forecasting analysis with our proprietary data. Confirm analytical work with a robust, quality-controlled model based on individual refinery benchmarks.

Analysts

Incorporate proprietary refinery monitor on/off signals for detailed unit run rates. Draw on the latest public data on refinery runs, bridging the gap between the actualised public data and estimates from our refinery monitors. Tap into information on major planned turnarounds to inform your forward-looking view.

Refiners

Forecast planned refinery turnarounds by individual refineries and PADD region as well as individual refinery crude runs and utilization rates for Gulf Coast refiners (Texas and Louisiana).

Related products

You might also be interested in:

- [Canadian Crude Oil Runs Forecast](#)

A bottom-up approach on well, project and upgrader level production data by region and crude quality.

- [US Crude Oil Production Forecast](#)

Understand the entire crude production landscape with proprietary data from 20,000+ individual wells, aggregated by basin and crude quality. We use a detailed, bottoms-up approach to deliver a daily and monthly production forecast.

- [Asset Connect](#)

Visualise the infrastructure and its interconnectivity across the North American crude oil supply chain.

Contact Us:

Europe: +44 131 243 4400

Americas: +1 713 470 1600

Asia Pacific: +65 6518 0800

Email: contactus@woodmac.com

Website: www.woodmac.com